

LONGTAIDI PRESENTATION



CONTENTS



- 1 ● Longtaidi Introduction
- 2 ● Products
- 3 ● Certifications
- 4 ● Inspection and Testing
- 5 ● References
- 6 ● Workload



Established in 2010
Employee: 408



Factory Size: 258,000 Square Meters



Orders in-take (2024): 220 Million USD
Export (2024): 80 Million USD



Factory Location: No.33 Huanghe East Road,
Economic Development Zone, Cangzhou City,
Hebei Province, P.R.China

Nearest Seaport: Tianjin China
Nearest International Airport: Beijing China



LONGTAIDI is the leading manufacturer of the following products.

1. Weld overlay clad pipes
2. Weld overlay clad fittings
3. Weld overlay clad flanges
4. Mechanical Lined Pipe [MLP]
5. Hot induction bends (CS/Clad)
6. Fittings (CS/AS/SS/DSS/SDSS)
7. Flanges (CS/AS/SS/DSS/SDSS)
8. Pre-fabrication, piping spools

With facility of ISO17025 Certified Laboratory in campus.

Main markets are Oil and Gas, Petrochemical, Refinery, Power plant, LNG, FPSOs.

LONGTAIDI takes pride in its commitment towards quality and integrity and our attitude towards the customer, supplier and all stakeholders in the group.



Weld Overlay Clad Pipes

- Size: 6 inch-60 inch
- CS W.T.: ≥ 9 mm
- Clad W.T.: ≥ 2 mm
- Maximum each clad pipe length: 12.5 meter
- Backing CS material: All grades of CS
- Clad material: 309 LMO / 316 L / Alloy 825 / Alloy 625
- Number of automatic TIG cladding machines: 80
(We have 50 twin head and 30 quad head machines)
- We have dedicated separate pipe ends cladding machine to carry out the weld overlay of additional thickness at the ends (100mm-200mm as designed by the client)
- Annual cladding filler wire deposition: 1,520 tons



Weld Overlay Clad Fittings/Flanges

- Size: 4 inch-60 inch
- CS W.T.: ≥ 9 mm
- Clad W.T.: ≥ 2 mm
- Backing CS material: All grades of CS
- Clad material: 309 LMO / 316 L / Alloy 825 / Alloy 625
- Number of automatic TIG cladding machines: 90
- Annual cladding filler wire deposition: 540 tons



Mechanically Lined Pipes (MLP)

- Size: 4"-28"
- CS W.T.: ≥ 6 mm
- CRA Liner Grade: 316 L /DSS 31803 /SDSS
32750/ N0825 / N0625
- CRA Liner WT: 2.0-6.0 mm
- Maximum each MLP pipe length: 12.5 meter
- Production Capacity: 150 km/year (Per day 40+
MLP of 6" to 12" OD and 26 days in a month).



Fittings (CS/AS/SS/DSS/SDSS)

- Size: 1/2 inch-60 inch
- W.T: $t \leq 120\text{mm}$
- Material: Carbon Steel / Alloy Steel / Stainless Steel /DSS / Alloy 825 & 625 Clad
- Capacity: 20,000 Tons/year



Flanges (CS/AS/SS/DSS/SDSS)

- Size: 1/2 inch-60 inch
- W.T: $t \leq 120\text{mm}$
- Material: Carbon steel, Alloy, Stainless, DSS, SDSS
- Capacity: 15,000 Tons/year



Hot Induction Bends

- Size: 2 inch-60 inch
- W.T.: $\leq 60\text{mm}$
- Material: Carbon steel, Alloy, Stainless, DSS, Clad 825 & 625
- Number of Bending machines: 6 Nos.
- Heat treatment furnace: 6 Set, One 15-meter, One 9-meter, One 6-meter, Two 4-meter and one 3-meter, maximum weight carrying capacity 40 tons
- These furnaces are equipped with variety of heat treatment process such as tempering, quenching and solution heat treatment
- Capacity: 20,000 Tons/year



Pre-fabrication, piping spools

- Size: 2 inch - 60 inch
- W.T: $t \leq 120\text{mm}$
- Material grades: CS/AS/Solid CRA/Clad CRA
- Machine: GTAW Auto – 7 sets, SAW – One Set
- More than 30 stations for the Manual SMAW and GTAW machines are available.
- Production Capacity: 150,000 Dia-inch/year (15,000 joints of 10 inch per year).
- Investment plan: We can increase the production capacity at a shorter notice to meet the client delivery requirement



API Q1 & API 5LD



ASME U & ASME PP



ISO 9001 & 14001 & 18001



PED



NORSOK M650



Raw Material Inspection



Visual Inspection

Dimension check

PMI Verification

Chemical analysis

Mechanical Verification

Document (MTC) check



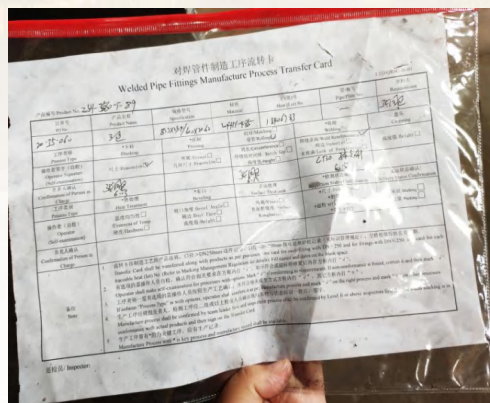
Process Inspection



All works undertaken during the manufacturing process are monitored, inspected and tested.

Such as

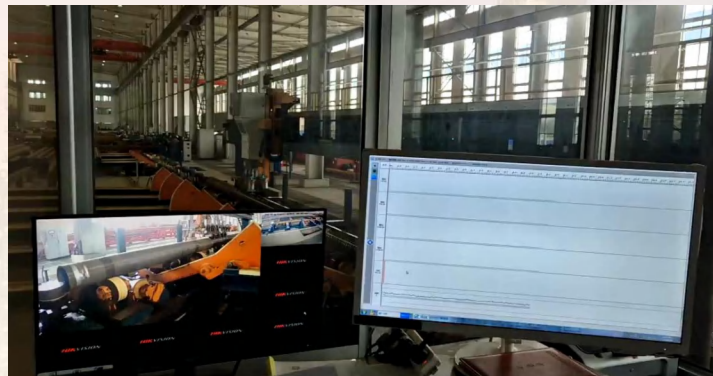
- identification of material
- parameter verification
- visual inspection
- inter-pass temperature check and for other project specific requirements.



Other inspection and tests (all available in house)



Manual
UT



Automatic
UT



PT inspection



PT inspection



PT inspection with HD Camera

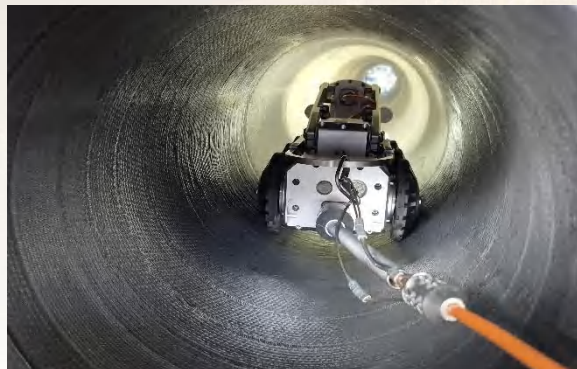
Other inspection and tests (all available in house)



Magnetic Particle Testing



X-Ray RT for MLP & Clad Pipes ends



Final Remote Visual – HD Camera with Crawler



PMI Verification



Surface Hardness

Other inspection and tests (all available in house)



Dimension Inspection



Direct Visual Inspection



Marking Inspection

Other inspection and tests (all available in house)

Laboratory test (ISO 17025 certified) such as Tensile, Impact, Chemical, corrosion, hardness, Micro, Macro



Packing Inspection

Package inspection to ensure the packing is strong enough to withstand damage during transportation.



- 1) ADNOC Hail and Gasha Project (Offshore) Abu Dhabi / **NPCC&SAIPEM JV**
- 2) ADNOC Hail and Gasha Project (Onshore) Abu Dhabi / **TECNIMONT**
- 3) ADNOC Bab Far North Full Field Development Project (Onshore) Abu Dhabi / **KENT**
- 4) ADNOC Umm Lulu Acceleration Project Abu Dhabi (Offshore) / **TARGET ENGINEERING**
- 5) ADNOC Bab Integrated Facilities Project Abu Dhabi (Onshore) / **CPECC**
- 6) ADNOC Asab Phase 2 project Abu Dhabi (Onshore) / **ARCHIDODON**
- 7) ADNOC Bab 485 Development project (Onshore) Abu Dhabi / **ARCHIRODON**
- 8) ADNOC Optimum Shah Gas Expansion Project (Onshore) Abu Dhabi / **SAIPEM**
- 9) ADNOC Upper Zakum 1.0 MMBD Sustain Phase 1- Surface facilities project Abu Dhabi / **Target+Technip**

- 10) QATAR ENERGY NFXP (Offshore) Qatar / **MCDERMOTT**
- 11) QATAR ENERGY LNG NFPS EPC 2 Qatar / **SAIPEM**
- 12) QATAR ENERGY Ras Laffan Petrochemicals Project Qatar / **QCON**

- 13) PETROBRAS FPSO Projects - P71/P78/P79/P80/P82/P83 / **SEATRUM, EBR, EBSE, MODEC, SBM**
- 14) BP N999 Tortue/Ahmeyim LNG 2020 MAURITANIA / **COSCO SHIPPING**
- 15) NEOM Green Hydrogen Saudi Arabia / **AIR PRODUCTS**
- 16) PETRO CHINA Halfaya Project Surface Facility Phase 3 / **CPECC**

Total Manufacture & Supply Concept- CS materials (CS Fittings and CS Flanges) Manufacturing to Corrosion Resistant Alloy Cladding / Lining to Machining to Inspection/Testing to Pipe Spools Fabrication to Site Welding/Installation.

Longtaidi offers the total solutions with regard to Piping and Pipelines that carry corrosive fluids. Longtaidi helps build the oil & gas assets with enhanced life. Longtaidi with its integrated manufacturing, inspection & testing facilities located at a single location is able to offer quality products / services at competitive prices and deliveries.

Longtaidi has in-house Forging, Cladding / Lining, Bending, Machining, Fabrication, Testing and Packing. We manufacture ourselves CS Fittings / CS Flanges (with Pre-Clad dimensions) meant for Clad Fittings / Clad Flanges. We buy CS Pipes from our Pipe mills and manufacture Clad / Lined Pipes. We have engineering capabilities inhouse to develop the pipe spools drawings based on isometric drawings. We have inhouse spools fabrication facilities (automatic, semi-automatic and manual): we carry out the cutting of clad pipes to spool lengths, prepare the clad pipe ends by band welding / bore machining / beveling and then carry out the welding of clad pipes to clad pipes, clad pipes to clad fittings, clad pipes to clad flanges and all other combinations (ensuring that the bore mismatch is less than 1.6 mm or even lesser). We also carry out the welding of Solid CRA Piping materials to Clad CRA Piping materials, after ensuring the bore of both match (we carry out the buttering on the Solid CRA piping materials to build additional materials for matching the bore with the Clad CRA piping materials). Bore matching is crucial for good fit-up and defect free / sound welding. We also have team to be mobilized to the site for welding of Tie-In joints / Field welding.

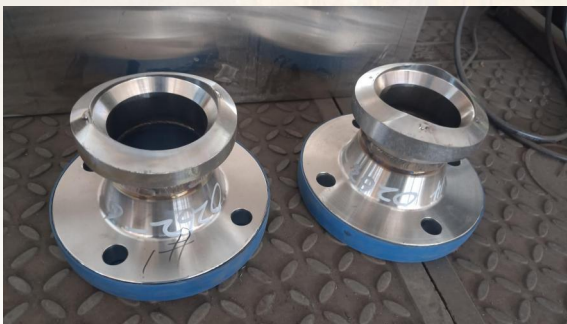
Base CS material for clading



Cladding products



Fabricated spools



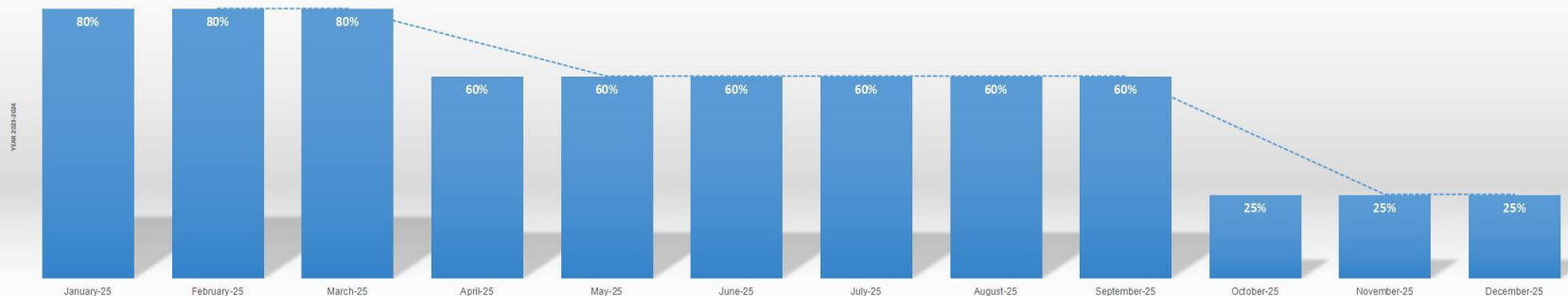



WORKLOAD SUMMARY (from Q1 2025 to Q4 2025)

Cangzhou Longtaidi Pipe Technology Co.,Ltd
 Tel: +86-010-56865280 Fax: +86-010-56865280
 Factory: Economic Development Zone, Cangzhou,
 Hebei Province, China

SR.NO	PRODUCT CATAGORY	Equipment (sets of horizontal cladding machines for pipe cladding) / total deposition of CRA	Capacity booked for projects in hand											
			January-25	February-25	March-25	April-25	May-25	June-25	July-25	August-25	September-25	October-25	November-25	December-25
1	WELD-OVERLAY CLAD PIPE	80 sets of horizontal cladding machines/ 1,520 tons of CRA deposition/year.	80%	80%	80%	60%	60%	60%	60%	60%	60%	25%	25%	25%

WORKLOAD (WELD-OVERLAY CLAD PIPE)



		WORKLOAD SUMMARY (from Q1 2025 to Q4 2025)										Cangzhou Longtaidi Pipe Technology Co.,Ltd Tel: +86-010-56865280 Fax: +86-010-56865280 Factory: Economic Development Zone, Cangzhou, Hebei Province, China		
SR.NO	PRODUCT CATAGORY	Equipment (sets of vertical cladding machines for fittings and flanges cladding) / total deposition of CRA	Capacity booked for projects in hand											
			January-25	February-25	March-25	April-25	May-25	June-25	July-25	August-25	September-25	October-25	November-25	December-25
1	WELD-OVERLAY FITTINGS AND FLANGES	90 sets of vertical cladding machines/ 540 tons of CRA deposition/year.	80%	80%	80%	60%	60%	60%	60%	60%	60%	30%	30%	30%

WORKLOAD (WELD-OVERLAY FITTINGS AND FLANGES)



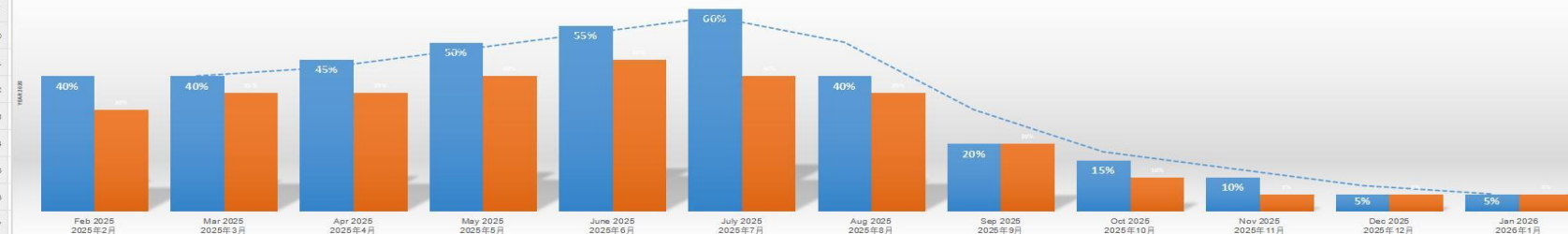

WORKLOAD SUMMARY (from Q1 2025 to Q4 2025)

工作量统计 (2025年第一季度到2025年第四季度)

隆泰迪管道科技有限公司
Cangzhou Longtai Pipe Technology
Co., Ltd
Tel: +86-010-5685290 Fax: +86-010-
5685290
Factory:
Economic Development Zone, Cangzh
ou, Hebei Province, China

SR.NO 序号	PRODUCT CATEGORY 产品名称	GENERAL PRODUCTION WORKLOAD CAPACITY (YEAR) 一般产能 (年)	CURRENT WORKLOAD Nov 2024 现产能负荷 (2025年2月)	Capacity booked for projects in hand											
				Feb 2025 2025年2月	Mar 2025 2025年3月	Apr 2025 2025年4月	May 2025 2025年5月	June 2025 2025年6月	July 2025 2025年7月	Aug 2025 2025年8月	Sep 2025 2025年9月	Oct 2025 2025年10月	Nov 2025 2025年11月	Dec 2025 2025年12月	Jan 2026 2026年1月
1	Fittings	20000 Tons / YEAR	40%	40%	40%	45%	50%	55%	60%	40%	20%	15%	10%	5%	5%
1	Flanges	15000 Tons / YEAR	30%	30%	35%	35%	40%	45%	40%	35%	20%	10%	5%	5%	5%

WORKLOAD





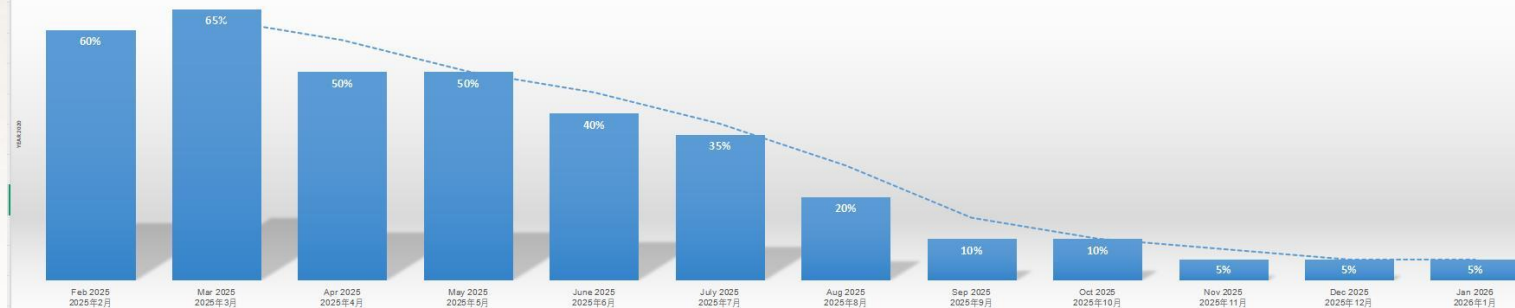
WORKLOAD SUMMARY (from Q1 2025 to Q4 2025)

工作量统计 (2025年第一季度到2025年第四季度)

沧州隆泰迪管道科技有限公司
Cangzhou Longtaidi Pipe Technology
Co., Ltd
Tel: +86-010-56852380 Fax: +86-010-
56852380
Factory:
Economic Development Zone, Cangzhou,
Hebei Province, China

SR.NO 序号	PRODUCT CATEGORY 产品名称	Material grade: (CS/AS/SS/DSS/SDSS)	CURRENT WORKLOAD Nov 2024 现产能负荷 (2025年2月)	Capacity booked for projects in hand											
				Feb 2025 2025年2月	Mar 2025 2025年3月	Apr 2025 2025年4月	May 2025 2025年5月	June 2025 2025年6月	July 2025 2025年7月	Aug 2025 2025年8月	Sep 2025 2025年9月	Oct 2025 2025年10月	Nov 2025 2025年11月	Dec 2025 2025年12月	Jan 2026 2026年1月
1	HOT INDUCTION BENDS	Capacity: 2,000 tons per year	60%	60%	65%	50%	50%	40%	35%	20%	10%	10%	5%	5%	5%

WORKLOAD

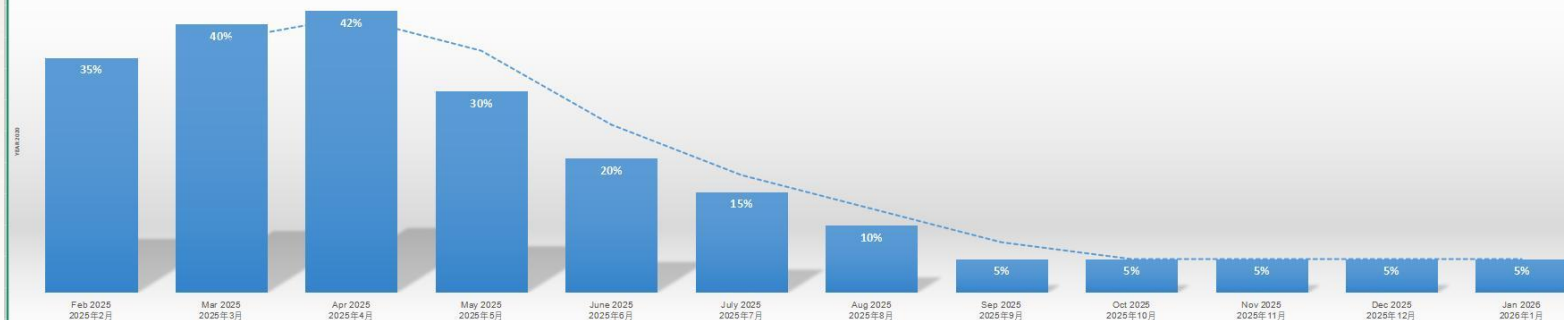



WORKLOAD SUMMARY (from Q1 2025 to Q4 2025)

工作量统计 (2025年第一季度到2025年第四季度)

 沧州隆泰迪管道科技有限公司
 Cangzhou Longtai Pipe Technology Co., Ltd
 Tel: +86-010-56852980 Fax: +86-010-56852980
 Factory:
 Economic Development Zone, Cangzhou, Hebei Province, China

SR.NO 序号	PRODUCT CATEGORY 产品名称	GENERAL PRODUCTION WORKLOAD CAPACITY (YEAR) 一般产能 (年)	CURRENT WORKLOAD Nov 2024 现产能负荷 (2025年2月)	Capacity booked for projects in hand											
				Feb 2025 2025年2月	Mar 2025 2025年3月	Apr 2025 2025年4月	May 2025 2025年5月	June 2025 2025年6月	July 2025 2025年7月	Aug 2025 2025年8月	Sep 2025 2025年9月	Oct 2025 2025年10月	Nov 2025 2025年11月	Dec 2025 2025年12月	Jan 2026 2026年1月
1	Mechanical lined pipes	Backing steel grade: Carbon steel CRA liner grade: 316L, N0825, N0625 Capacity per year: 150km per year 40+ MLP OF 6" TO 12" OD per day 26 workdays per month	35%	35%	40%	42%	30%	20%	15%	10%	5%	5%	5%	5%	5%

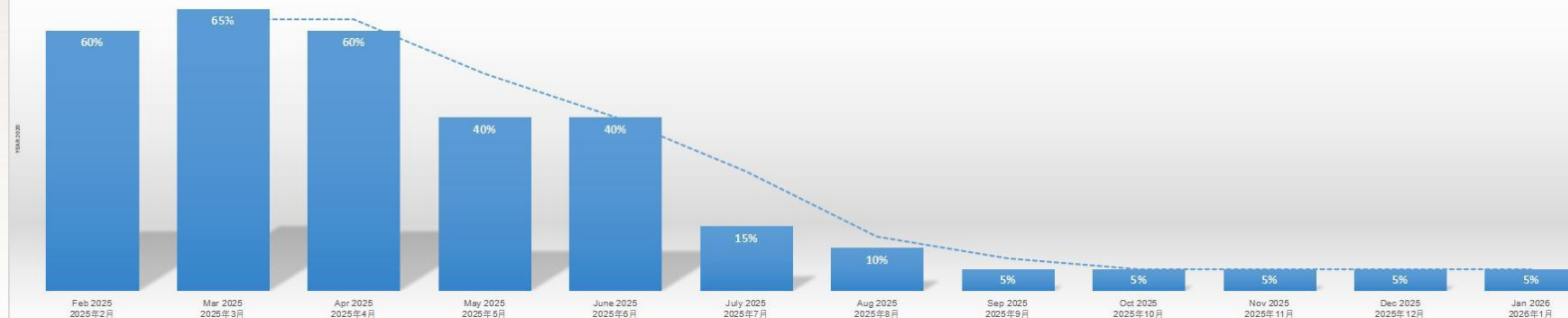
WORKLOAD



WORKLOAD SUMMARY (from Q1 2025 to Q4 2025)

工作量统计 (2025年第一季度到2025年第四季度)

 隆泰迪管道科技有限公司
 Cangzhou Longtaidi Pipe Technology
 Co., Ltd
 Tel: +86-010-50853280 Fax: +86-010-50853280
 Factory:
 Economic Development Zone, Cangzhou,
 Hebei Province, China

SR.NO 序号	PRODUCT CATEGORY 产品名称	Material Grade(CS/AS/SS/DSS/SDSS/CLAD)	CURRENT WORKLOAD Nov 2024 现产能负荷 (2025年2月)	Capacity booked for projects in hand											
				Feb 2025 2025年2月	Mar 2025 2025年3月	Apr 2025 2025年4月	May 2025 2025年5月	June 2025 2025年6月	July 2025 2025年7月	Aug 2025 2025年8月	Sep 2025 2025年9月	Oct 2025 2025年10月	Nov 2025 2025年11月	Dec 2025 2025年12月	Jan 2026 2026年1月
1	Spool Fabrication	Production Capacity:150,000Dia-inch/year (15,000 joints of 10inch per year). We can increase production capacity at a shorter notice to meet the client delivery requirement)	60%	60%	65%	60%	40%	40%	15%	10%	5%	5%	5%	5%	5%

WORKLOAD




Thank you for your attention