

A black and white photograph of three workers in safety gear walking away from the camera in a field at sunset. The workers are wearing hard hats and high-visibility clothing. The sky is filled with soft, glowing clouds, and the ground is covered in grass. The overall mood is serene and professional.

**TROYGUARD  
CATALOGUE  
SAFETY 2022**

[WWW.TROYGUARD.COM](http://WWW.TROYGUARD.COM)

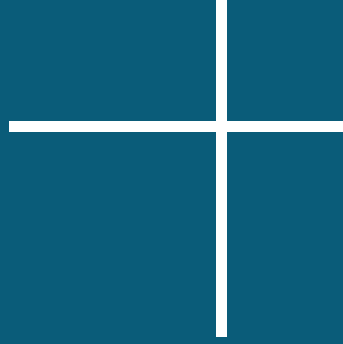


**troyguard**

A Recognized expertise in the Oil & Gas,  
Mining, Railway, Heavy Industry and Energy sectors.

A range of safety products with highest ratio  
of quality and price.

Possibility to produce under your brand,  
requirements and standards.  
Based in France with a big network around globe.



# SUMMARY

FLAME RETARDANT - PAGE 2

DISPOSABLE - PAGE 14

HIGH VIZ - PAGE 16



# NORMS

EN 20471



**EN ISO 20471 CERTIFICATION FOR HIGH VISIBILITY WORKWEAR**

EN ISO 11612



**EN ISO 11612 CLOTHING TO PROTECT AGAINST HEAT AND FLAME**

EN 1149-5

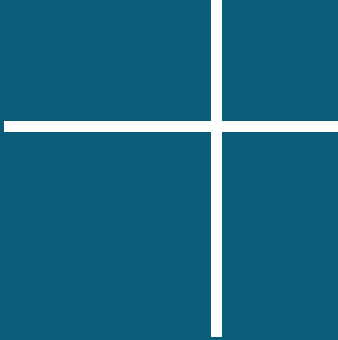


**EN ISO 1149-5 CLOTHING TO PROTECT AGAINST HEAT AND FLAME**

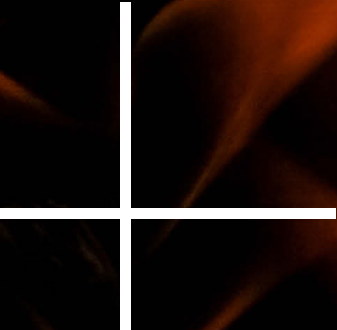
EN ISO 11611



**EN ISO 11611 PROTECTION AGAINST SMALL SPLASHES OF MOLTEN METAL, AND BRIEF CONTACT WITH FLAME**



# FLAME RETARDANT





## HI VIZ INDUSTRY JACKET + PANTS

### SPECIFICATION

- \* EN 20471 CLASS 3
- \* FLAME RETARDANT THERMOWELD REFLECTIVE TAPE
- COMPLY WITH EN 20471
- \* FLAME RETARDANT THREAD
- \* FRONT CLOSURE WITH NYLON ZIPPER
- \* TWO FRONT POCKETS
- \* TWO SIDE POCKETS WITH 2 BELLOWS IN CONTRAST ON SIDE\*

- \* STAND COLLAR WITH INSIDE COLLAR IN CONTRAST FABRIC
- \* DOUBLE FRONT CLOSURE WITH NYLON ZIPPER
- \* TWO CHEST POCKETS, RIGHT CHEST POCKET HAS BADGE HOLDER
- \* TWO FRONT POCKETS
- \* ONE SLEEVE POCKET

### COMPOSITION

75% COTTON  
24% POLYESTER  
1% ANTISTATIC FIBER  
260GSM TWILL



## HI VIZ INDUSTRY COVERALL

### SPECIFICATION

- \* YKK ZIPPER BRASS BUTTONS IN FRONT CLOSURE
- \* CHEST POCKETS WITH FLAPS
- \* ADJUSTABLE WAISTBAND AND CUFFS
- \* ACTIONBACK FOR FREE MOVEMENT
- \* SIDE POCKETS WITH HIDDEN SIDE ACCESS
- \* SHAPED KNEES WITH ADJUSTABLE INSIDE POCKETS
- \* BACK POCKETS WITH FLAPS
- \* FA REFLECTIVE TAPE ON SLEEVES & LEGS & WAIST

### COMPOSITION

80% COTTON 19% POLYESTER  
1% ANTI-STATIC  
350 GSM





**FRSHHV711**

## FR INDUSTRIAL SHIRT

### SPECIFICATION

- \* FOUR EYE BUTTON CLOSURE
- \* TWO CHEST POCKETS WITH BUTTONED FLAP
- « SCM FR REFLECTIVE TAPE AROUND ARMS AND WAIST
- \* ADJUSTABLE CUFFS WITH BUTTONS
- \* FR THREAD

### COMPOSITION

80% COTTON  
 19% ECO RECYCLE POLYESTER  
 1% ANTISTATIC



**FRJPHV711**

## HI VIZ INDUSTRY JACKET + PANTS

### SPECIFICATION

- \* CONCEALED FRONT YKK ZIPPER AND PRESS STUDIO
- \* CHEST POCKETS WITH FLAPS
- \* HIDDEN KEYRING HOLDER AND STRAP FOR ID. POCKET
- \* HAND POCKETS WITH FLAP
- \* FR REFLECTIVE TAPE ON CHEST, SLEEVES AND WAIST



- \* YKK ZIPPER' BRASS BUTTONS IN FRONT CLOSURE
- \* BACK POCKETS WITH FLAPS
- \* LEFT CARGO POCKET WITH FLAP,
- \* RIGHT LEG WITH RULER POCKET
- \* SHAPED KNEES WITH ADJUSTABLE \* INSIDE KNEEPAD POCKETS
- \* FR REFLECTIVE TAPE AROUND LEGS

### COMPOSITION

350GAM TWILL  
 80% COTTON  
 19% ECO RECYCLE POLYESTER  
 1% ANTI-STATIC



**FRCOHV001**

# HI VIZ INDUSTRY JACKET + PANTS

## SPECIFICATION

- \* BRASS BUTTONS IN FRONT CLOSURE
- \* FR REFLECTIVE TAPE
- \* 2 CHEST POCKETS WITH FLAP 1 SLEEVE POCKET WITH FLAP
- « 2 HAND POCKETS & 2 BACK POCKETS |
- \* BACK PLEATS
- \* ADJUSTABLE WAISTBAND AND CUFFS

## COMPOSITION

99% COTTON  
1% ANTISTATIC FIBER  
350GSM SATIN



**FRCOHV002**

# HI VIZ INDUSTRY COVERALL

## SPECIFICATION

- \* BRASS BUTTONS IN FRONT CLOSURE
- \* FR REFLECTIVE TAPE
- \* 2 CHEST POCKETS WITH FLAP 1 SLEEVE POCKET WITH FLAP
- « 2 HAND POCKETS & 2 BACK POCKETS |
- \* BACK PLEATS
- \* ADJUSTABLE WAISTBAND AND CUFFS

## COMPOSITION

99% COTTON  
1% ANTISTATIC FIBER  
350GSM SATIN







**FRJPHV001**

# ANTI-FLAME JACKET + PANTS

## SPECIFICATION

- \* YK ZIPPER/ BRASS BUTTONS IN FRONT CLOSURE
- \* REFLECTIVE TAPE ON SHOULDERS & SIEEVES
- \* 2 CHEST POCKETS WITH FLAPS & 2 HAND POCKETS
- \* BACK PLEATS
- \* ADJUSTABLE CUFFS

- \* YK ZIPPER; BRASS BUTTONS IN FRONT CLOSURE
- \* REFLECTIVE TAPE AROUND LEGS
- \* 1 LEG POCKET WITH FLAP & 2 HAND POCKETS & 2 BACK POCKETS

## COMPOSITION

99% COTTON 1% ANTI-STATIC



**FRJPHV002**

# MULTIFUNCTION COVERALL

## SPECIFICATION

- \* 3M REFLECTIVE TAPE
- \* MEET UPF 50+
- \* TWO CHEST POCKETS
- \* TWO SIDE AND BACK POCKETS
- \* ELASTICATED AT THE WAIST
- \* FLAME RETARDANT
- \* ANTI-UV
- \* INSECT REPELLENT
- \* ANTISTATIC

## COMPOSITION

100% COTTON  
190-320 GSM TWILL



**FRCO001**

## **FLAME RETARDANT COVERALL**



### SPECIFICATION

---

- \* BACK DESIGN FOR EASY MOVE
- \* ADJUSTABLE CUFF WITH SNAPS
- ° FULL ELASTICIZED BACK WAIST
- \* INHERENTLY ARAMID SEWING THREAD

### COMPOSITION

---

83% COTTON 12% NYLON  
7OZ TWILL



**FRJCOV004**

## **FLAME RETARDANT COVERALL**



### SPECIFICATION

---

- X CROSS STRIPS REFLECTIVE ON THE BACK
- \* BACK DESIGN FOR EASY MOVE
- \* ADJUSTABLE CUFF WITH SNAPS
- ° FULL ELASTICIZED BACK WAIST
- \* INHERENTLY ARAMID SEWING THREAD

### COMPOSITION

---

83% COTTON 12% NYLON  
9OZ TWILL





**MUSHI001**

**MULTIFUNCTION SHIRT**

SPECIFICATION

- \* 3M REFLECTIVE TAPE
- \* MEET UPF 50+ :
- \* BUTTON CLOSED IN THE FRONT
- \* TWO CHEST POCKETS WITH FLAP
- \* ALL DOUBLE NEEDLE

FUNCTIONAL OPTION

- ° FLAME RETARDANT :
  - ° ANTI-UV
- \* INSECT REPELLENT :
  - \* ANTISTATIC

COMPOSITION

100% COTTON  
155-240GSM TWILL



**MUSHI002**

**MULTIFUNCTION SHIRT**

SPECIFICATION

- \* 3M REFLECTIVE TAPE
- \* MEET UPF 50+ :
- \* BUTTON CLOSED IN THE FRONT
- \* TWO CHEST POCKETS WITH FLAP
- \* ALL DOUBLE NEEDLE

FUNCTIONAL OPTION

- ° FLAME RETARDANT :
  - ° ANTI-UV
- \* INSECT REPELLENT :
  - \* ANTISTATIC

COMPOSITION

100% COTTON  
155-240GSM TWILL



FRWCO001

# WINTER COVERALL FLAME RETARDANT

## SPECIFICATION



TWO FRONT SWING POCKETS WITH SIDE ACCESS  
TWO BREAST POCKETS WITH ZIPPER  
TWO RADIO LOOPS ABOVE CHEST POCKETS  
INTERNAL KNEE PAD POCKETS  
TRIPLE STITCHED WITH BAR TACKED POINTS FOR EXTRA DURABILITY  
FR REFLECTIVE TAPES ON SHOULDER/ARMS/LEGS  
ADJUSTABLE CUFFS AND WAIST

## COMPOSITION

93% META- ARAMID, 5% PARA-ARAMID, 2% CARBON FIBRE  
LINING FABRIC : 100% COTTON FLAME RESISTANT LINING  
FILLING FABRIC : 100% POLYESTER FLAME RESISTANT FILLING  
150 GSM



FRWCO001

# WINTER JACKET

## SPECIFICATION

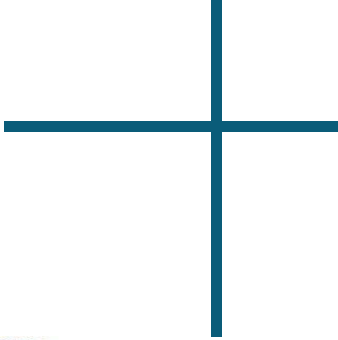


PHONE POCKET  
4 POCKETS FOR AMPLE STORAGE  
PACK AWAY HOOD FOR ADDED FUNCTIONALITY,  
TWO-WAY FRONT PLASTIC MOULDED ZIP  
TWO RADIO LOOPS ABOVE CHEST POCKETS  
INTERNAL CHEST POCKET  
FR REFLECTIVE TAPES ON WAIST/ARMS  
RIBBED CUFFS FOR COMFORT,

## COMPOSITION

FR 98% POLYESTER, 2% ANTISTATIC CARBON FIBRE, BREATHABLE, PU COATED  
LINING FABRIC : 100% COTTON FLAME RESISTANT LINING  
FILLING FABRIC : 100% MODACRYLIC FLAME RESISTANT  
150 GSM





**WORKSHIRT**

SPECIFICATION

- \*INHERENT ARAMID SEWING THREAD
- \*TWO CHEST POCKETS WITH BUTTONS
- \*SPECIAL BREATHABLE DESIGN ON BACK

COMPOSITION

88% COTTON 12% NYLON

**WOSHI001**



**PLAID WORKSHIRT**

SPECIFICATION

- \*INHERENT ARAMID SEWING THREAD
- \*ULTRASOFT FRARCTEX FR FABRIC
- \*CHEST POCKET WITH BUTTON

COMPOSITION

88% COTTON 12% NYLON

**WOSHI002**



**PLAID WORKSHIRT**

SPECIFICATION

- \*INHERENT ARAMID SEWING THREAD
- \*ULTRASOFT FRARCTEX FR FABRIC
- \*CHEST POCKET WITH BUTTON

COMPOSITION

88% COTTON 12% NYLON

**WOSHI003**



**FRINJA01**

**FLAME RETARDANT  
INSULATED JACKET**



SPECIFICATION

- \* INHERENTLY ARAMID SEWING THREAD
- \* DURABLE FRDURATEX TRADITIONAL FR CANVAS FABNC
- \* FRONT WITH METAL TAPE
- \* COTTON FA LINING AND PADDING

COMPOSITION

100% COTTON  
11OZ CANVAS



**FRINJA02**

**FLAME RETARDANT  
INSULATED JACKET**



SPECIFICATION

- \* DURABLE FRARCTEX FR FABRIC ON FRONT AND BACK
- \* FLEECE SLEEVE TO ALLOW MAX MOVEMENT
- \* RIB CUFF TO STOP WIND
- \* 100% MODACRYLIC BATTING QULITED WITH FLEECE
- \* GREAT WARM AND SAFE WITH HOOD
- \* INHERENTLY ARAMID SEWING THREAD

COMPOSITION

88% COTTON 12% NYLON  
9OZ SOFT CANVAS



FRHO01

# INHERENT FLAME RETARDANT HOODIE



## SPECIFICATION

- \* DURABLE FRARCTEX FR FABRIC ON FRONT AND BACK
- \* FLEECE SLEEVE TO ALLOW MAX MOVEMENT
- \* RIB CUFF TO STOP WIND
- \* 100% MODACRYLIC BATTING QULITED WITH FLEECE
- \* GREAT WARM AND SAFE WITH HOOD
- \* INHERENTLY ARAMID SEWING THREAD

## COMPOSITION

88% COTTON 12% NYLON  
90Z SOFT CANVAS



FRHO02

# INHERENT FLAME RETARDANT HOODIE

## SPECIFICATION

- \* DURABLE FRARCTEX FR FABRIC ON FRONT AND BACK
- \* FLEECE SLEEVE TO ALLOW MAX MOVEMENT
- \* RIB CUFF TO STOP WIND
- \* 100% MODACRYLIC BATTING QULITED WITH FLEECE
- \* GREAT WARM AND SAFE WITH HOOD
- \* INHERENTLY ARAMID SEWING THREAD

## COMPOSITION

88% COTTON 12% NYLON  
90Z SOFT CANVAS





### MULTIFUNCTION PANTS

#### SPECIFICATION

- \* 3M REFLECTIVE TAPE :
- \* MEET UPF 50+ :
- \* JEAN BUTTON :
- + YKK METAL ZIPPER

#### FUNCTIONAL OPTION

- ° FLAME RETARDANT :
- ° ANTI-UV
- \* INSECT REPELLENT :
- \* ANTISTATIC

#### COMPOSITION

100% COTTON 190 - 320 GSM

**MUPANO01**



### FLAME RETARDANT DENIM PANTS

#### SPECIFICATION

- \* ULTRASOFT FRDURATEX FR FABRIC
- \* INHERENTLY ARAMID SEWING THREAD
- \* SUPER SOFT COTTON FR FABRIC
- \* EXCELLENT STRETCH FUNCTION

#### COMPOSITION

98% COTTON 2% STRETCH

10.5OZ STRETCH DENIM

**FRDENO01**





## FLAME RETARDANT HENLEY T-SHIRT

### SPECIFICATION

---

- \* INHERENT ARAMID SEWING THREAD
- \* LIGHTWEIGHT MAXIMUM COMFORTABLE FABRIC
- \* RIBBED COLLAR AND CUFF TO MAINTAIN SHAPE

### COMPOSITION

---

100% COTTON  
6.5OZ KNITTED FABRIC

FRTSH01



## FLAME RETARDANT POLO SHIRT

### SPECIFICATION

---

- \* INHERENT ARAMID SEWING THREAD
- \* LIGHTWEIGHT MAXIMUM COMFORTABLE FABRIC :
- \* RIBBED CUFF TO MAINTAIN SHAPE :
- \* INHERENT MODACRYLIC COLLAR:

### COMPOSITION

---

\*100% COTTON :  
\*6.5OZ KNITTED FABRIC

FFRPO01



# DISPOSABLE



## DISPOSABLE COVERALL CAT 4/5/6

### SPECIFICATION

---

ONE-PIECE COVERALL WITH HOOD,  
ZIPPER  
LAMINATED POLYPROPYLENE

EN13034:2005 + A1:2009 TYPE 6  
EN 13892-1 2004 + A1:2010 TYPE 5  
EN 14605 2005 + A1:2009 TYPE 4  
EN 14126:2003 / EN 1073-2:2002/EN1149-5:2018

**DICO0456**



## SMS COVERALL WITH HOOD

### SPECIFICATION

---

ONE-PIECE COVERALL WITH HOOD,  
ZIPPER  
LAMINATED POLYPROPYLENE

EN13034:2005 + A1:2009 TYPE 6  
EN 13892-1 2004 + A1:2010 TYPE 5  
EN 14605 2005 + A1:2009 TYPE 4  
EN 14126:2003 / EN 1073-2:2002/EN1149-5:2018

**DICOSMS**



## DISPOSABLE COVERALL CAT 5/6

### SPECIFICATION

---

MICROPOROUS + SMS  
65 + 55G

DICO56



### SHOE COVER

#### SPECIFICATION

- \* 3M REFLECTIVE TAPE :
- \* MEET UPF 50+ :
- \* JEAN BUTTON :
- + YKK METAL ZIPPER

#### FUNCTIONAL OPTION

- ° FLAME RETARDANT :
- \* ANTI-UV
- \* INSECT REPELLENT :
- \* ANTISTATIC

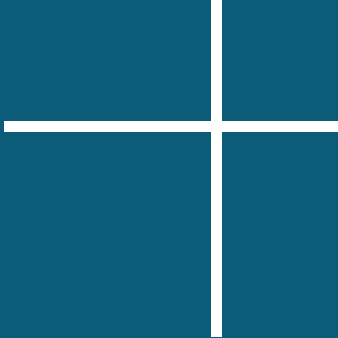
#### COMPOSITION

100% COTTON 190 - 320 GSM

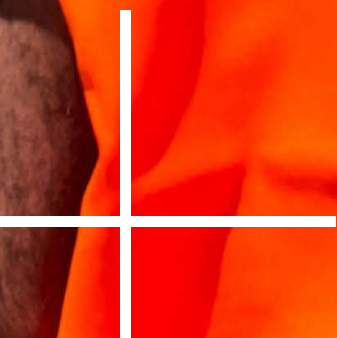


### NITRILE DISPOSABLE

SPECIFICATION  
\*NITRILE POWDER FREE  
BOX OF 100 GLOVES



# HIGH VISIBILITY





**VEHV1**  
100% Polyester



**VEHV2**  
100% Polyester Tricot and  
Polyester Mesh Material



**VEHV3**  
100% Polyester - 170 Gram



**VEHV2C**  
100% Polyester Tricot and  
Polyester Mesh Material



**PHV1**  
100% Polyester Fancy fabric  
with PU breathable coating  
3M Thinsulate insulation  
lining



**RSHV1**  
100% Polyester 150D Oxford  
with Polyurethane Coating



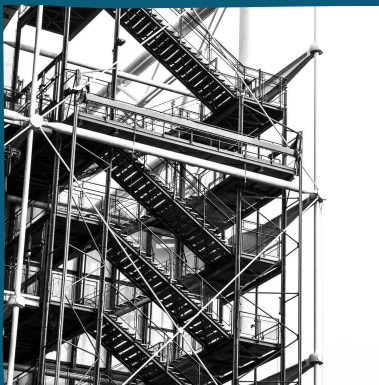
## OUR OTHER RANGES (TRADING)



FIRE EQUIPMENTS



POWER TOOLS



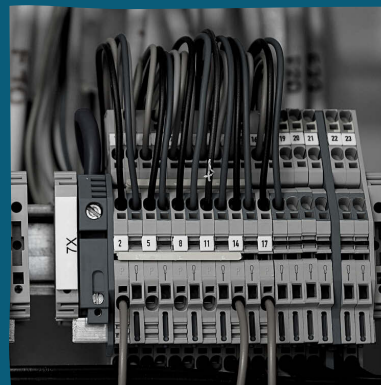
SCAFFOLDING



PPE



CONSTRUCTION EQUIPMENTS



ELECTRICAL EQUIPMENTS

**Contact us at :**  
**[sales@troyguard.com](mailto:sales@troyguard.com)**

**Visit us at**  
**[www.troyguard.com](http://www.troyguard.com)**

**5 Rue du Manoir de Servigné RENNES 35000**  
**RENNES, France**



**troyguard**